



EVERYWHERE
NETWORKS

215 Cooper Street, 2nd floor
Ottawa ON Canada K2P 0G2
Phone: (613) 230.2925
Fax: (613) 235.1295
Email: info@everywhereoffice.com
Visit: www.everywhereoffice.com

FileWay™

ISA Configuration Guide

Version 1.2

Copyright (c) Everywhere Networks,
All rights reserved

© Everywhere Networks Corporation, Inc .All rights reserved.

Complying with all applicable copyright laws is the responsibility of the user. Without limiting the rights under copyright, no part of this document may be reproduced, stored in or introduced into a retrieval system, or transmitted in any form or by any means (electronic, mechanical, photocopying, recording or otherwise) or for any purpose, without the express written permission of Everywhere Networks Corporation

Everywhere Network may have patents, patent applications, trademarks, copyrights or other intellectual property rights covering subject matter in this document. Except as expressly provided in any written license agreement from Everywhere Networks Corporation, the furnishing of this document does not give you any license to these patents, trademarks, copyrights or other intellectual property.

The names of actual companies and products mentioned herein may be the trademarks of their respective owners.

Everywhere Networks Corporation 215-2 Cooper St. Ottawa, Ontario, Canada, K2L 2N8, PH 613-230-2925

Accessing FileWay on Port 80 (HTTP)	3
Accessing FileWay on Port 443 (HTTPS).....	9
Integration of ISA with FileWay for OWA	12

Accessing FileWay on Port 80 (HTTP)

Before configuring the ISA Server to be able to access FileWay using HTTP, you need to download and install ISA Feature Pack 1 from <http://www.microsoft.com/downloads/details.aspx?FamilyID=2f92b02c-ac49-44df-af6c-5be084b345f9&DisplayLang=en>.

To configure the ISA server

1. Click the **Start** button, point to **Programs**, point to **Microsoft ISA Server**, and then click **ISA Management**; the **ISA Management** window opens as shown in Figure 1.

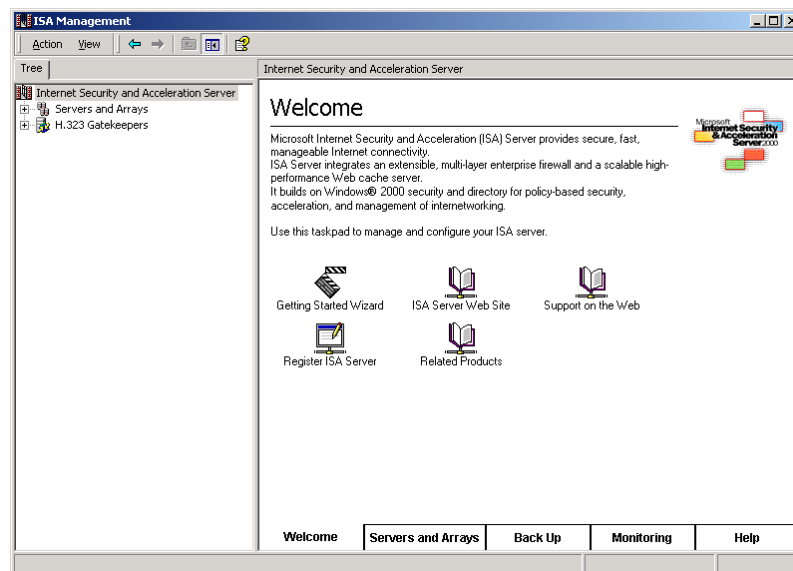


Figure 1 ISA Management Window

2. In the console tree of the **ISA Management** window, click the **Servers and Arrays**, then click the '**ISA Server**' (where ISA Server is the name of your ISA server), and then click **Policy Elements**.
3. Right-click the **Destination Sets**, point to **New**, and then click **Set**; the **New Destination Set** dialog opens as shown in Figure 2.

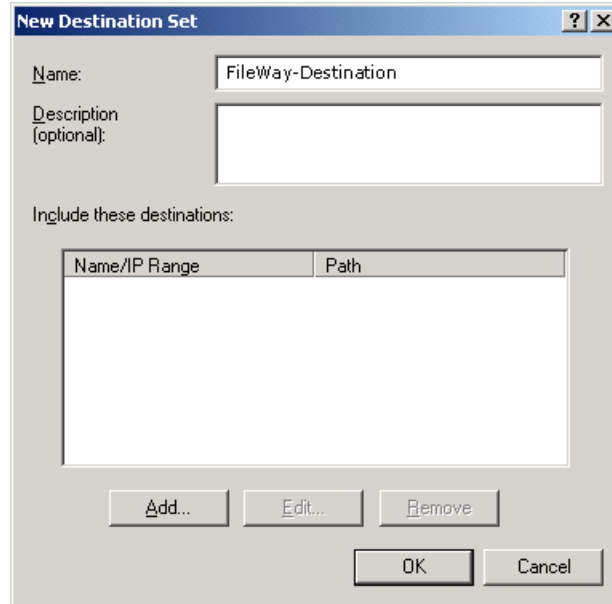


Figure 2 *New Destination Set Dialog*

4. Type a name for the destination set, for example '**FileWay-Destination**', in the **Name** field. This field is mandatory.
5. You may type description for the new destination set in the **Description** field.
6. Click **Add**; the **Add/Edit Destination** dialog opens as shown in Figure 3.
7. Select the **IP Addresses** radio button, and then type the IP address in the **From** field.

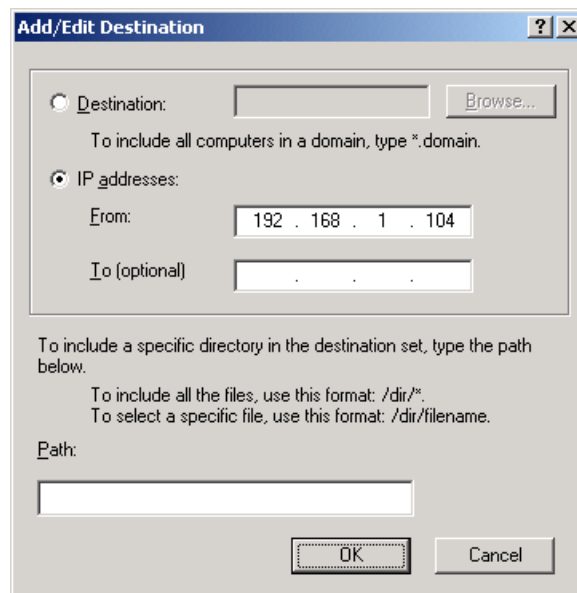


Figure 3 *Add/Edit Destination*

8. Click **OK**.

- In the console tree of the **ISA Management** window, click **Expand Publishing** under Servers and Arrays, right-click the **Web Publishing Rules**, point to **New**, and then click **Rule**; the **New Web Publishing Rule Wizard** opens as shown in Figure 4.

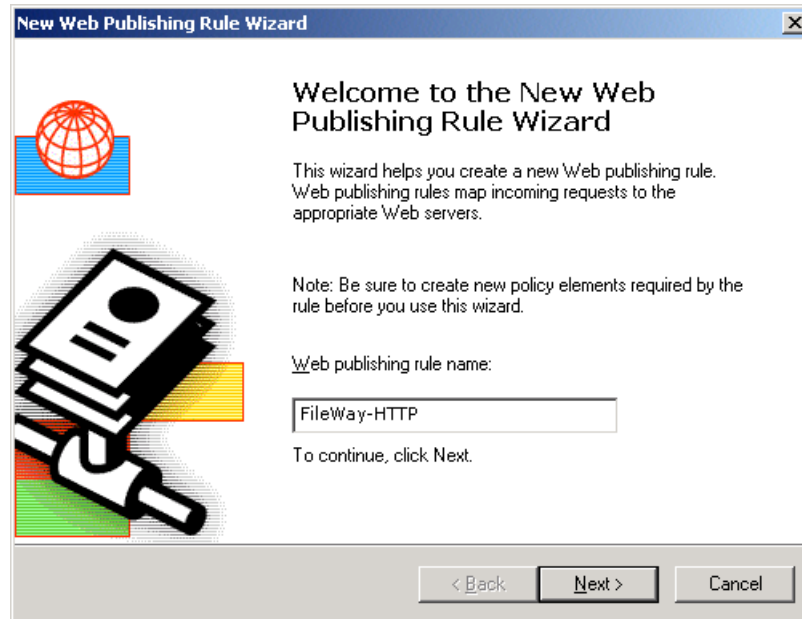


Figure 4 *New Web Publishing Rule Wizard*

- Type a name for the new rule, for example '**FileWay-HTTP**', in the **Web Publishing Rule Name** field, and then click **Next**. The **Destination Sets** dialog opens as shown in Figure 5.

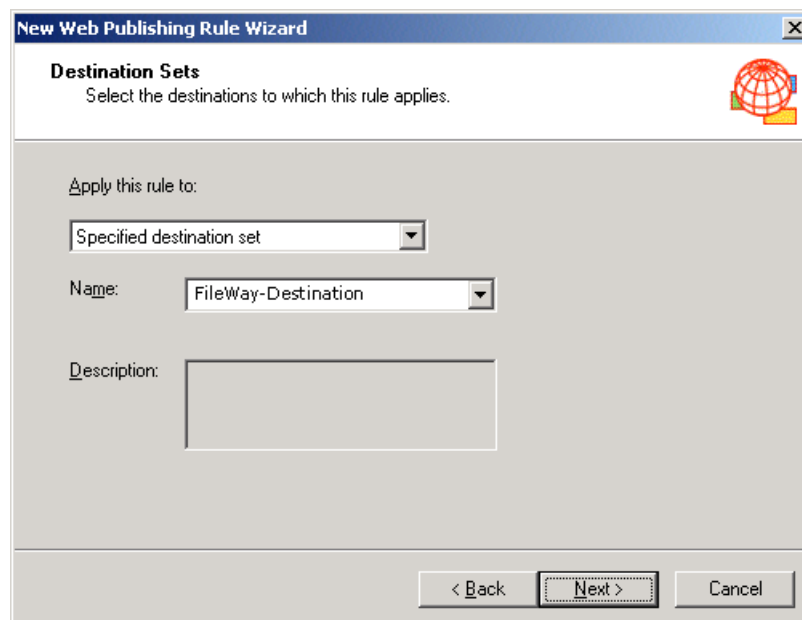


Figure 5 *Destination Sets Dialog*

11. Select '**Specified destination set**' from the **Apply This Rule To** drop-down list.
12. Select '**FileWay-Destination**' from the **Name** drop-down list, and then click **Next**; the **Client Type** dialog opens as shown in Figure 6.

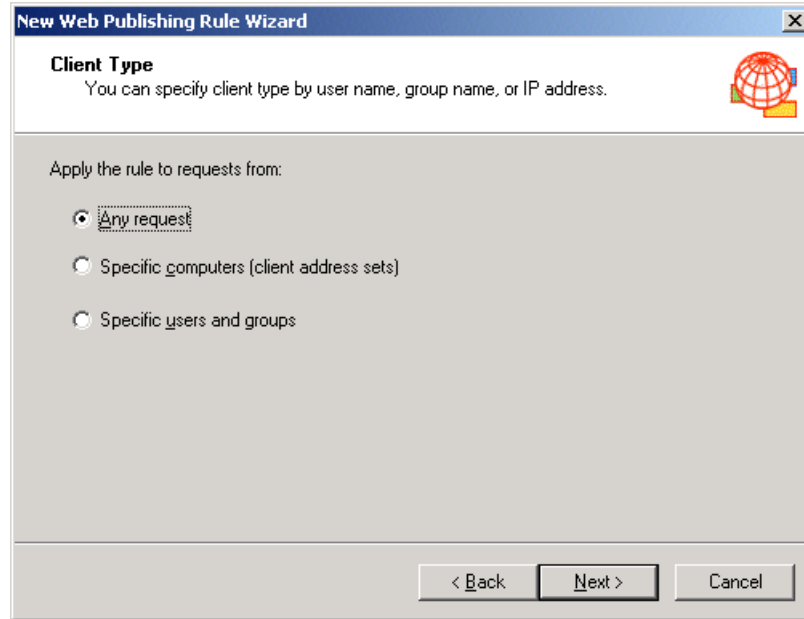


Figure 6 *Client Type Dialog*

13. Select the **Any Request** radio button, and then click **Next**; the **Rule Action** dialog opens as shown in Figure 7.
14. Select the **Redirect the Request to this Internal Web Server (Name or IP Address)** radio button, and then type your FileWay server IP address.

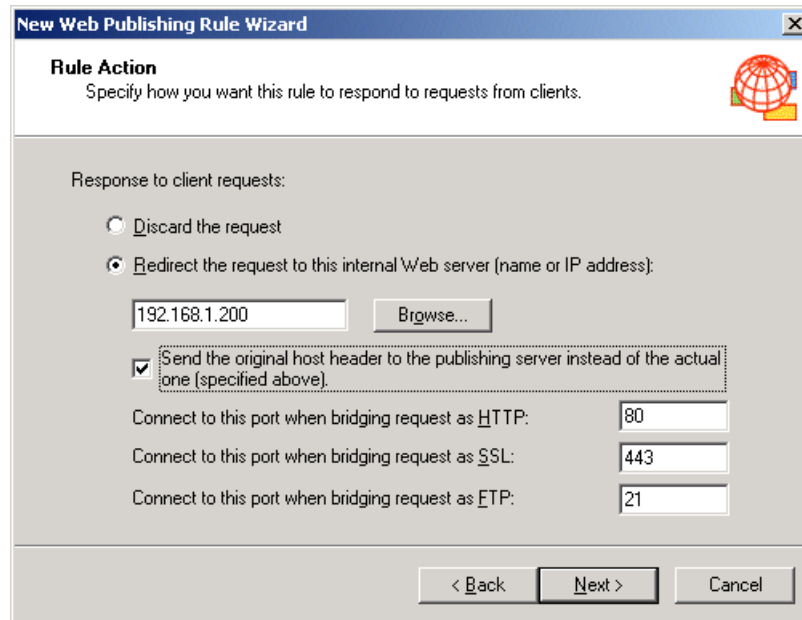


Figure 7 Rule Action Dialog

15. Click **Next**; the **Completing the New Web Publishing Rule Wizard** dialog opens as shown in Figure 8.
16. Click **Finish**.



Figure 8 New Web Publishing Rule Wizard Completion

17. Right click the Web publishing rule you have just created, and then click **Properties**; the **Properties** dialog opens as shown in Figure 9. Go to the **Actions** tab.

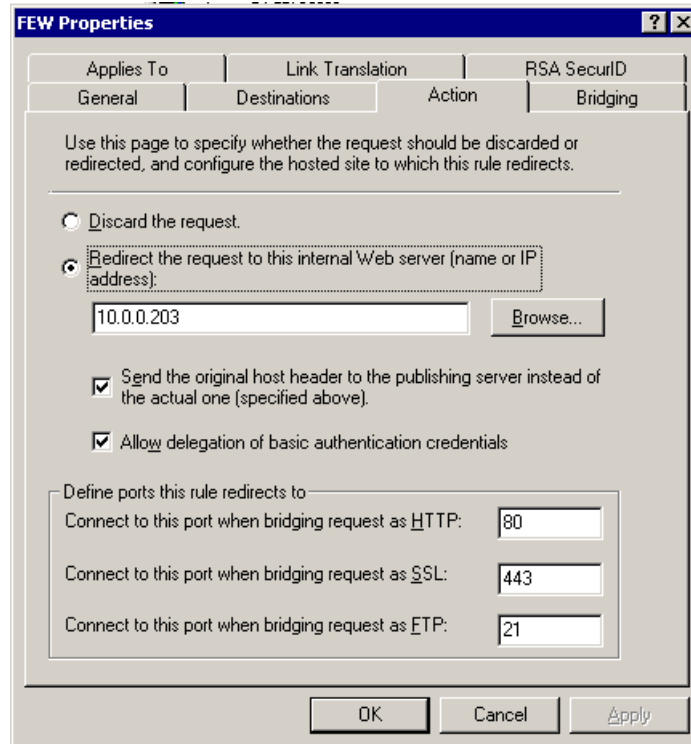


Figure 9 New Web Publishing Rule Wizard Completion

18. Select the check box next to **Allow delegation of basic authentication credentials**.
19. Click **OK**.

Accessing FileWay on Port 443 (HTTPs)

Before configuring the ISA Server and the FileWay server to be able to access FileWay using HTTPs, you need to download and install ISA Feature Pack 1 from <http://www.microsoft.com/downloads/details.aspx?FamilyID=2f92b02c-ac49-44df-af6c-5be084b345f9&DisplayLang=en>.

To configure the ISA server

1. Click the **Start** button, point to **Programs**, point to **Microsoft ISA Server**, and then click **ISA Management**; the **ISA Management** window opens as shown in Figure 10.

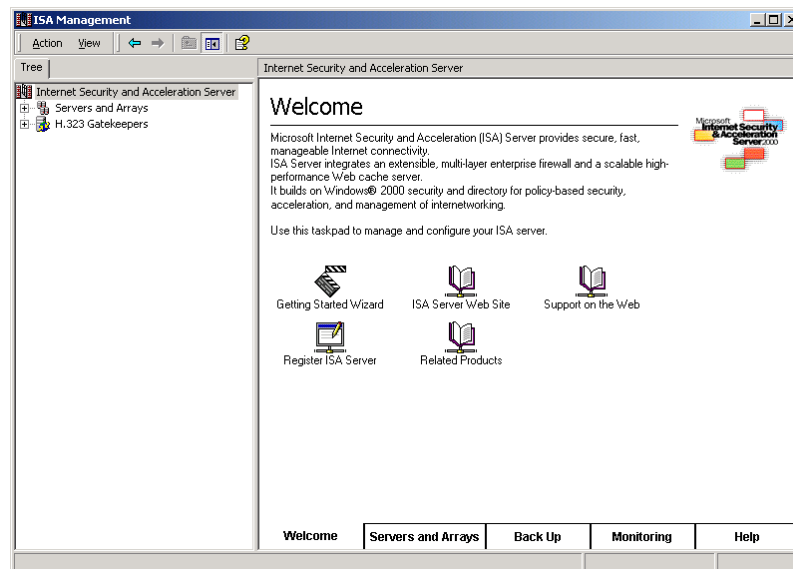


Figure 10 ISA Management Window

2. In the console tree of **ISA Management**, click the **Servers and Arrays**, then click the '**ISA Server**' (where ISA Server is the name of your ISA server), and then click **Publishing**.
3. Right-click the **Server Publishing Rules**, point to **New**, and then click **Rule**; the **New Destination Set** dialog opens as shown in Figure 11.



Figure 11 *New Server Publishing Rule Wizard*

4. Type a name for the server publishing rule, for example '**FileWay-HTTPS**', in the **Server Publishing rule** field, and then click **Next**; the **Address Mapping** dialog opens as shown in Figure 12.
5. Type your FileWay server IP Address in the **IP Address of Internal Server** field.
6. Type your **External IP Address on ISA Server**.

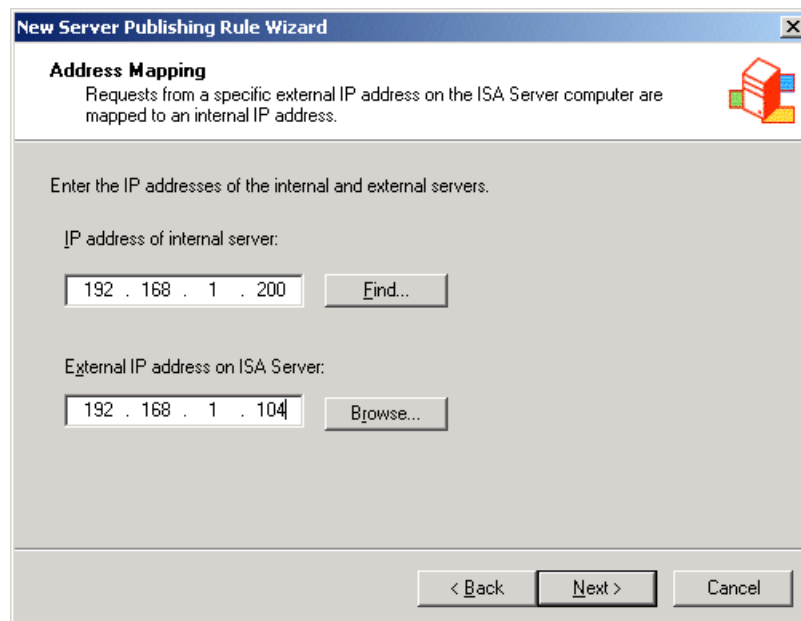


Figure 12 *New Server Publishing Rule Wizard*

7. Click **Next**; the **Protocol Settings** dialog opens as shown in Figure 13.

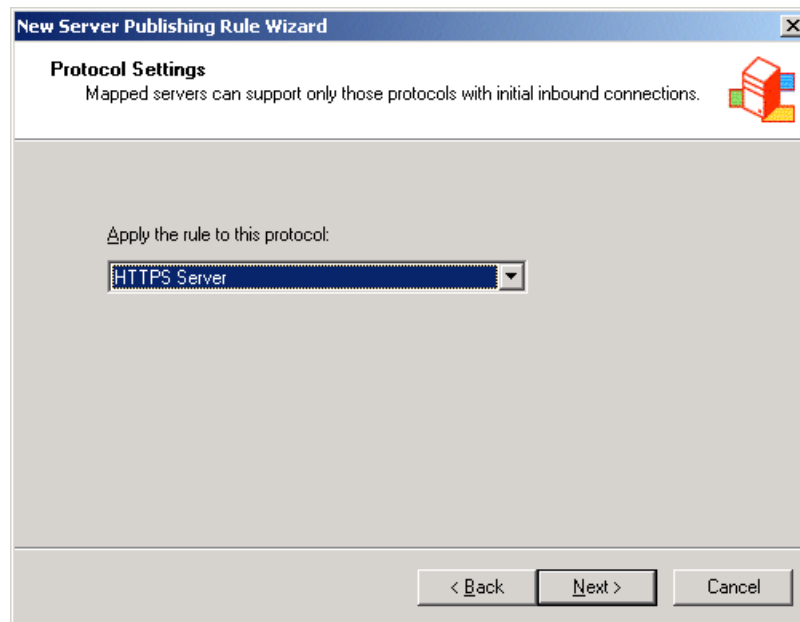


Figure 13 Protocol Settings Dialog

8. Select **HTTPS Server** from the **Apply the Rule to this Protocol** drop-down list, and then click **Next**; the **Client Type** dialog opens as shown in Figure 14.

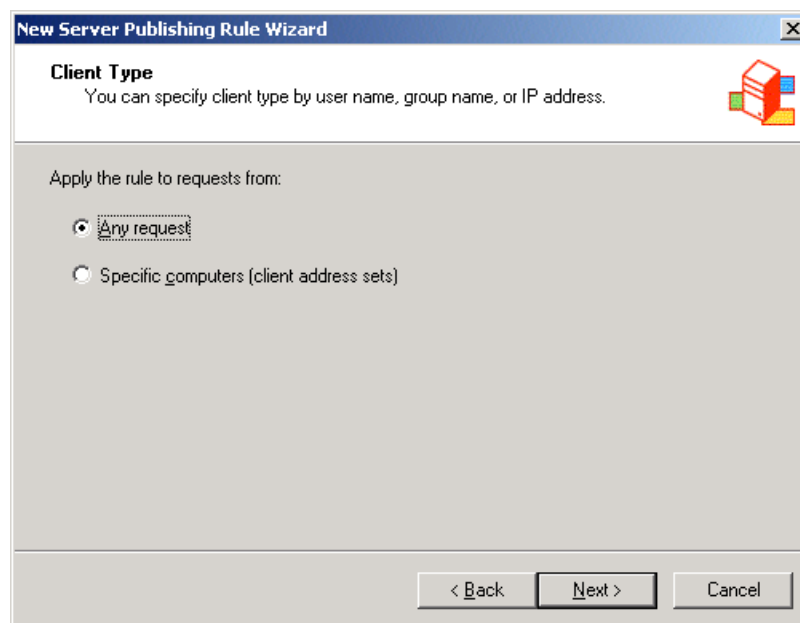


Figure 14 Client Type Dialog

9. Select the **Any Request** radio button.
10. Click **Next**, and then click **Finish**.

Integration of ISA with FileWay for OWA

To integrate FileWay with OWA, please refer to FileWay Installation Guide under <http://www.fileway.com/whitepapers.htm>

To integrate ISA with OWA, please follow the steps in the following link: <http://support.microsoft.com/default.aspx?scid=kb%3ben-us%3b290113>

Please note that you need to check the **Allow delegation of basic authentication credentials** option, as it is not highlighted in the Microsoft link.